



GMT MONTHLY MEMBERSHIP PROGRESS REPORT

Results as of: 5/31/2018

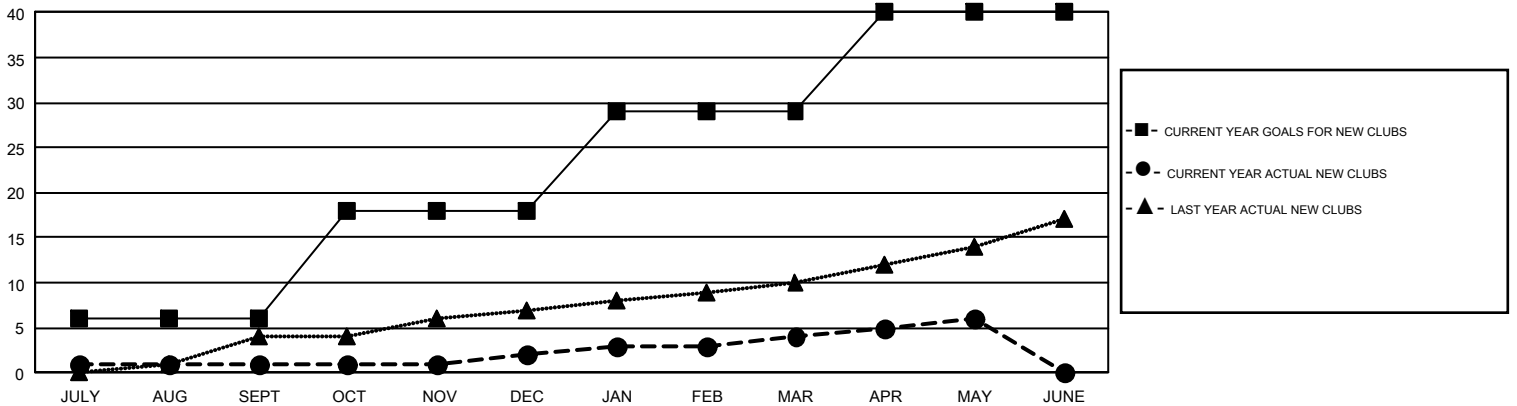
GMT Constitutional Area 1, Group C

GMT: STEVE ANTON

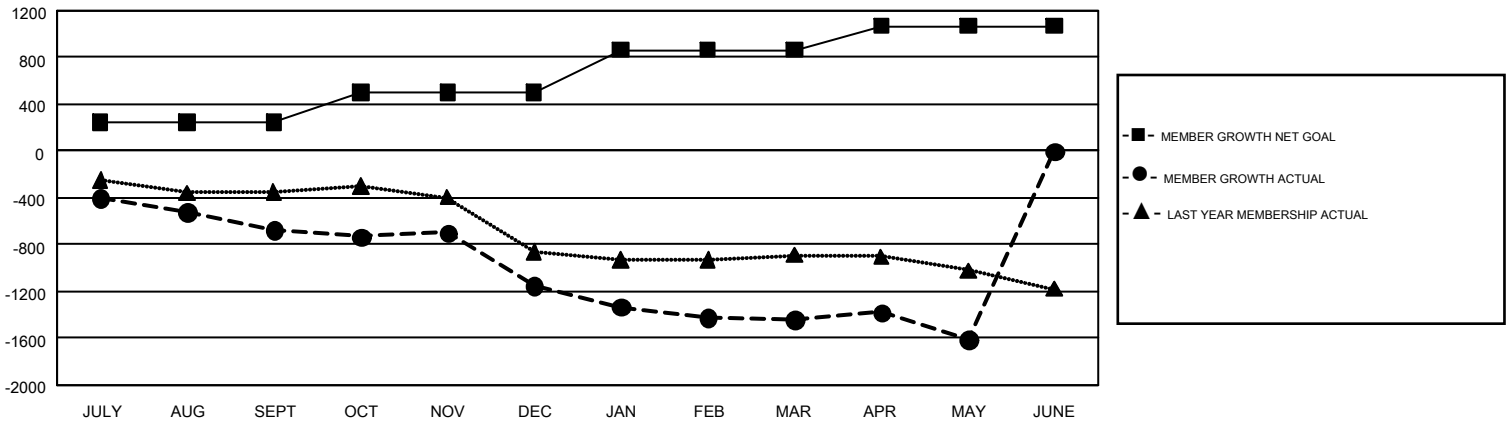
REPORT DOES NOT INCLUDE CLUBS IN UNDISTRICTED AREAS.

Clubs				Members			
RESULTS FOR 2017-2018				RESULTS FOR 2017-2018			
QUARTER	NEW CLUB GOAL	NEW CLUBS	DROPPED CLUBS	QUARTER	MEMBER GROWTH NET GOAL	MEMBER GROWTH ACTUAL	DROPPED MEMBERS ACTUAL (including transfers)
JULY/AUG/SEPT	6	1	8	JULY/AUG/SEPT	243	796	1,357
OCT/NOV/DEC	12	1	21	OCT/NOV/DEC	261	864	1,251
JAN/FEB/MAR	11	2	8	JAN/FEB/MAR	362	932	1,117
APR/MAY/JUNE	11	2	3	APR/MAY/JUNE	206	755	857

GOALS AND ACTUAL NEW CLUBS CUMULATIVE



GOALS AND ACTUAL MEMBERS CUMULATIVE



DROPPED CLUBS: 40	893 CLUBS OF 1,522 ADDED 1 OR MORE NEW MEMBERS	GENDER DISTRIBUTION MALE 29,222 (72.12%) FEMALE 11,296 (27.88%)
DROPPED MEMBERS DECEASED 645 CLUB CANCELLED 185 OTHER 3,749 <hr/> TOTAL 4,579	CLICK HERE FOR CUMULATIVE MEMBERSHIP DATA	TOTAL FAMILY UNIT MEMBERS 7,459 FAMILY MEMBERS PAYING HALF DUES 3,827